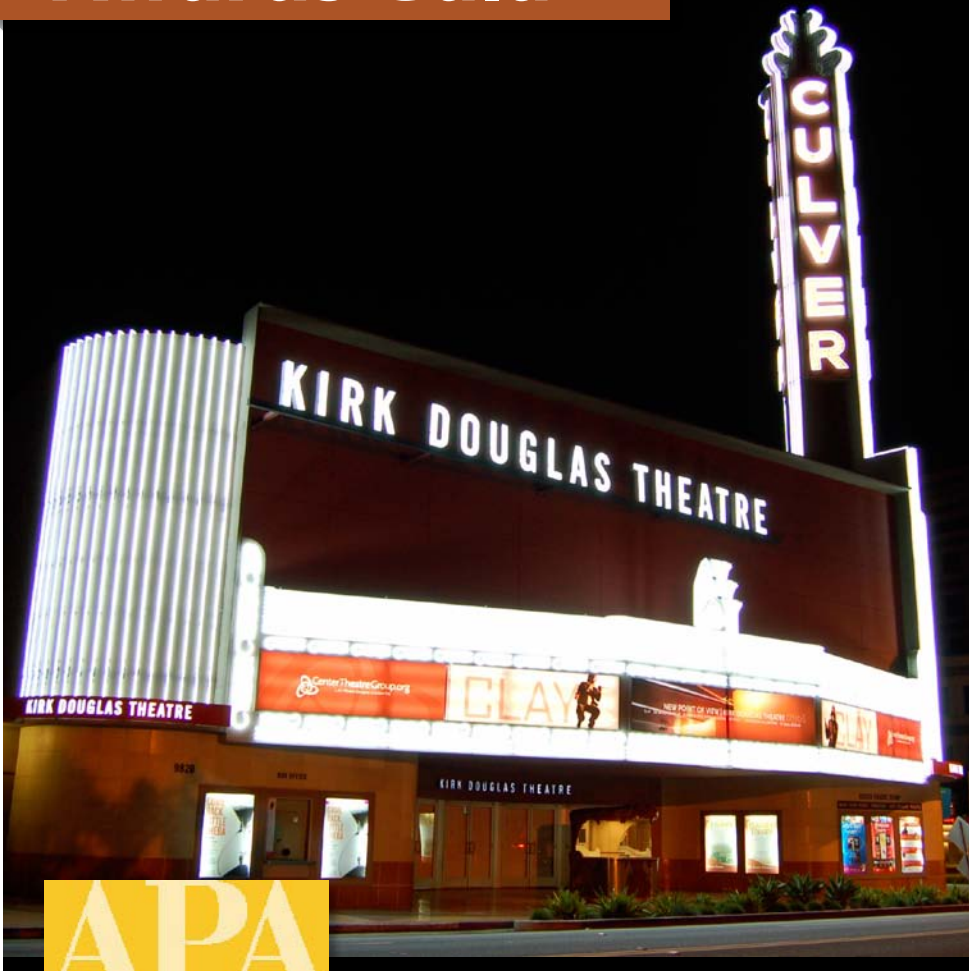


# 2012 APA LA Awards Gala

American Planning Association  
Los Angeles Section



Kirk Douglas Theatre  
Culver City, CA  
Thursday, June 28, 2012

# Evening Program

**5:30 - 7:00 Reception**

**7:00 - 8:00 Awards Ceremony**

**Welcome**

Peter Carter

*Vice Director, Awards, APA LA*

**APA LA Address & Awards**

Introduction – Marissa Aho

*Director, APA LA*

**Concluding Remarks**

Francisco Contreras

*Vice Director, Awards, APA LA*

**8:00-9:00 Dessert Reception**

*Thank you for joining us for the 2012 APA LA Awards Gala to celebrate the best in Los Angeles planning.*

*Very Special Thanks to:*

*Jacqui Swartz*

*Lars Carlson*



# Jurors

Carol Barrett  
*City of San Gabriel*

Evelyn Blumenberg  
*UCLA*

Reuben Caldwell  
*City of Los Angeles*

Ryan Gohlich  
*City of Beverly Hills*

Tom Henry  
*City of Los Angeles*

Stanley Hoffman  
*Stanley R. Hoffman Associates*

John Keho  
*City of West Hollywood*

Deborah Murphy  
*Los Angeles Walks*

Patrick Prescott  
*City of Burbank*

Bianca Siegel  
*City of West Hollywood*

Jing Yeo  
*City of Santa Monica*

# Awards

## Comprehensive Plan Award, Large Jurisdiction

Downtown Plan, City of Long Beach

*City of Long Beach, Department of Development Services*

### Award of Merit

Hollywood Community Plan

*Los Angeles Department of City Planning,*

*Mary Richardson, Kevin Keller, Conni Pallini-Tipton*

## Comprehensive Plan Award, Small Jurisdiction

### Award of Merit

Old Town La Verne Specific Plan

*City of La Verne, The Arroyo Group*

## Planning Excellence Award for Best Practice

Southern California Plug-In Electric Vehicle  
Readiness Plan & Atlas

*UCLA Luskin Center for Innovation, J.R. DeShazo, Ayala Ben-Yehuda,  
Norman Wong, Susan Woodward, Brett Williams*

## Planning Excellence in Implementation, Small Jurisdiction

Rosemead Boulevard Safety Enhancement and  
Beautification Project

*Temple City City Council*



# Awards

## Planning Excellence in Implementation, Small Jurisdiction

### **Award of Merit**

Canyon Creek Infill Affordable Housing Project  
*City of Calabasas, Thomas Safran & Associates, Withee  
Malcolm Architects*

## Planning Excellence Award for Grassroots Initiative

Complete Streets Working Group  
*Downtown Los Angeles Neighborhood Council*

## Public Outreach Award

Virgil Village Traffic Calming Plan  
*Los Angeles Neighborhood Initiative, Los Angeles  
Department of Transportation, Studio One Eleven*

### **Award of Merit**

West Boulevard Community Linkages and Revitalization Plan  
*Los Angeles Neighborhood Initiative, Los Angeles County  
Metropolitan Transportation Authority, RRM Design Group*

# Awards

## Focused Issue Planning Award

### South Bay Bicycle Master Plan

*Los Angeles County Bicycle Coalition, South Bay Bicycle Coalition, Alta Planning + Design*

#### **Award of Merit**

North Glendale Historic Context

*City of Glendale Community Development Department*

## Neighborhood Planning Award

### Downtown Bellflower Revitalization Vision Strategy

*City of Bellflower*

#### **Award of Merit**

"Maryland Off Broadway" Art & Entertainment District

*City of Glendale Community Development Department*

## Social Change and Diversity Award

### Century Villages at Cabrillo

*Century Housing, City of Long Beach,  
The Planning Center | DC&E*



# Awards

## Distinguished Leadership Award

Citizen Planner  
*Stephanie Landregan*

## Individual Journalist Award

*Josh Stephens*

## Distinguished Leadership Award, Organization

*Los Angeles Neighborhood Initiative*

## John Chase Visionary Award

*To be announced*

These awards and APA LA programming are made possible through the generous support of our sponsors:

Gold Sponsors



Silver Sponsors

