



2020 APA LOS ANGELES PLANNING AWARDS

UCLA URBAN PLANNING PROGRAM

*Urban Planning at the UCLA
Luskin School of Public Affairs*

AWARD OF EXCELLENCE
PLANNING LANDMARK



MICHAEL WOO

*Dean of Cal Poly Pomona College of
Environmental Design (2009-2019);
Los Angeles City Councilmember (1985
– 1993) and Planning Commissioner
(2005 -2012)*

AWARD OF EXCELLENCE
PLANNING PIONEER





TAMIKA L. BUTLER

[HOME](#) [ABOUT](#)

TAMIKA L. BUTLER, ESQ.,

*Director of Planning for California and the
Director of Equity and Inclusion at Toole
Design; Past Executive Director of the Los
Angeles Neighborhood Land Trust; Past
Executive Director of the Los Angeles County
Bicycle Coalition*

AWARD OF EXCELLENCE
ADVANCING DIVERSITY AND
SOCIAL CHANGE IN HONOR
OF PAUL DAVIDOFF

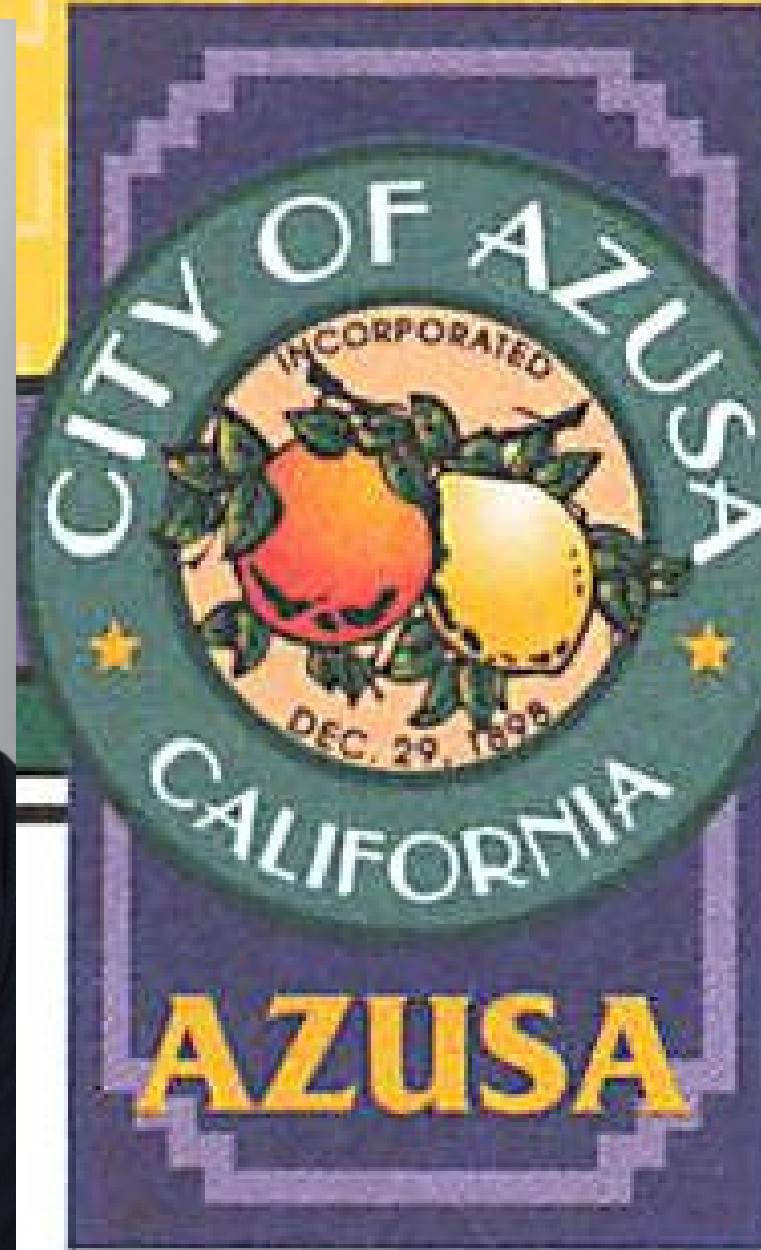
Shining light on
inequality, inequity,
& social injustice



MANUEL MUÑOZ

Planning Manager, City of Azusa

OUTSTANDING
YOUNG PLANNER



HON. MEGHAN SAHLI-WELLS

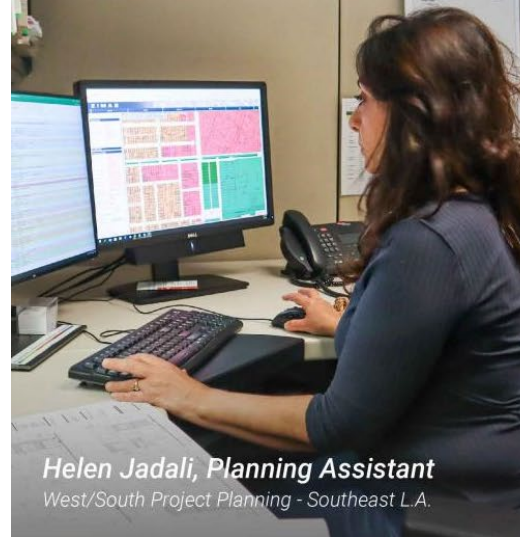
*Councilmember, City of Culver City;
Member of the Regional Council,
Southern California Association of
Governments (SCAG); Board
Directors of Clean Power Alliance;
Board of Directors, Westside Cities
Council of Governments*

AWARD OF EXCELLENCE
PLANNING ADVOCATE



Participate in the
**Online
Workshop**

Housing Element Update 2021-2029



Helen Jadali, Planning Assistant
West/South Project Planning - Southeast L.A.



Michelle Singh, Senior City Planner
West/South Project Planning



Liku Abera, City Planning Associate
Central Project Planning - Hollywoodland

LOS ANGELES CITY PLANNING

Department of Los Angeles City Planning

**AWARD OF EXCELLENCE
PLANNING AGENCY**





CLAIRE BOWIN

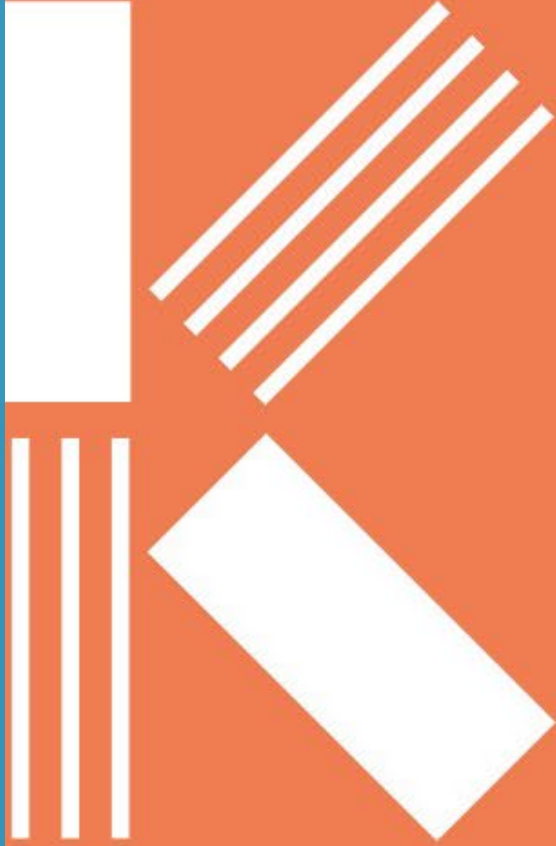
*Senior Planning Associate at Alta + Design; Past Senior City Planner
at Los Angeles City Planning*

JOHN CHASE VISIONARY AWARD

KOUNKUEY DESIGN INITIATIVE

Kounkuey Design Initiative

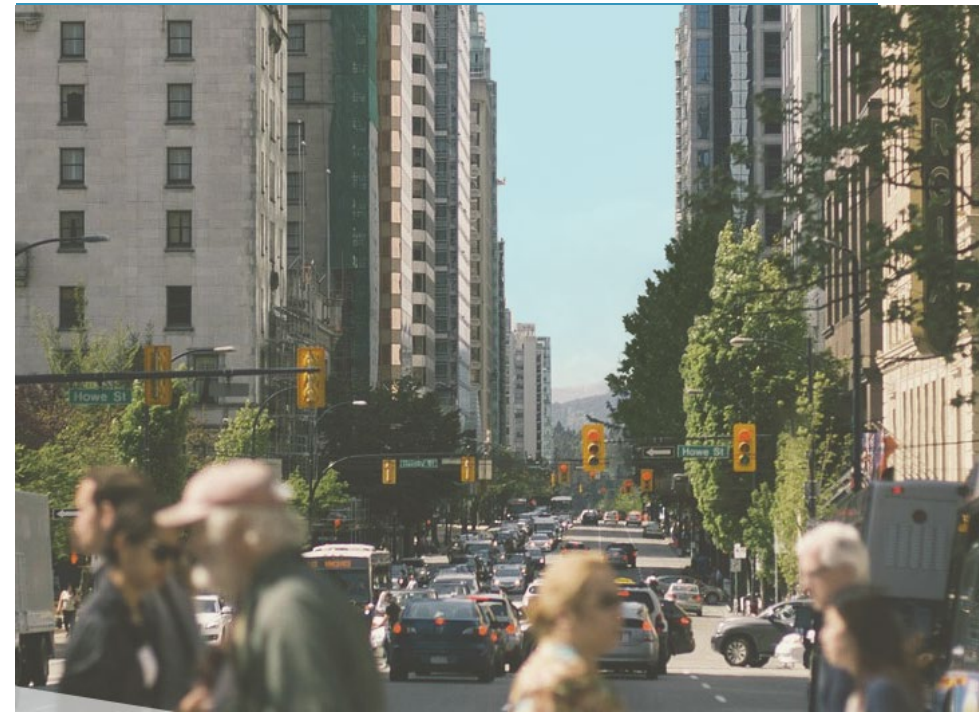
AWARD OF EXCELLENCE
EMERGING PLANNING
AND DESIGN FIRM



FEHR & PEERS

Fehr & Peers

AWARD OF EXCELLENCE
PLANNING FIRM



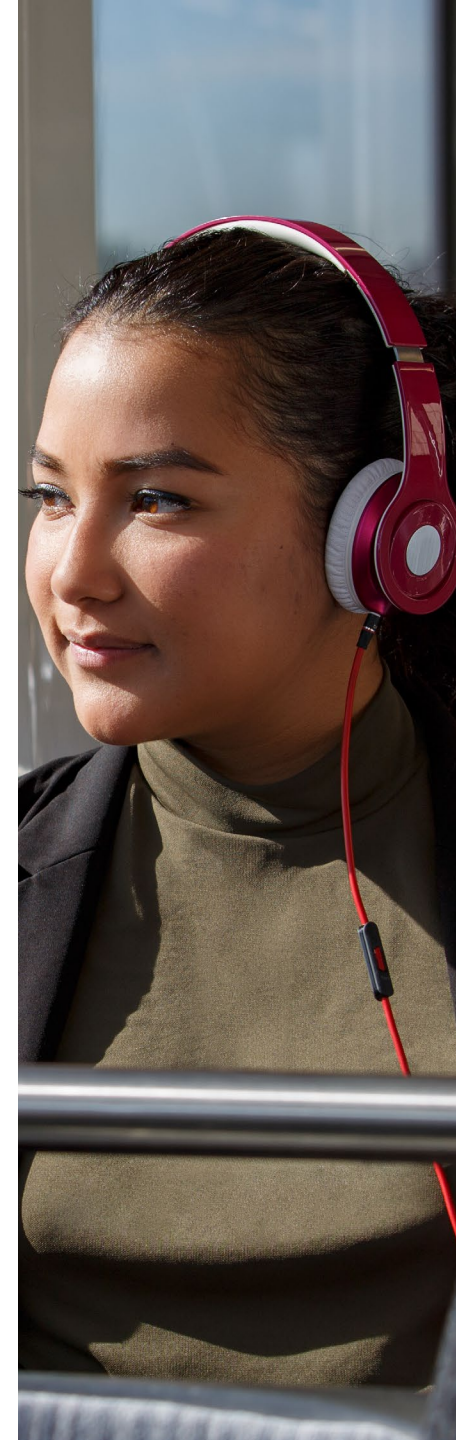
USING INNOVATIVE METHODS TO UNDERSTAND HOW WOMEN TRAVEL

Developing the innovative community-based planning methods that we used in *Understanding How Women Travel* required expanding beyond the conventional methods of surveying and conducting focus groups. A review and description of ethnographic methods is included in Appendix E.



UNDERSTANDING HOW WOMEN TRAVEL STUDY (UHWWT): LA METRO

LA Metro, Fehr &Peers, Pueblo Planning, Redhill Group, UCLA
AWARD OF EXCELLENCE
BEST PRACTICES



buses and trains arrive when expected. For women in Los Angeles who rely on Metro to get to work, go to doctor's appointments, and pick kids up from school, reliable transit service is a lifeline.

- » The top three complaints filed by female Metro bus riders are all related to reliability – pass-ups, no shows, late buses, and unreliable or absence of real-time information.
- » At our pop-up events, in the focus groups, and in the participatory workshop discussions, we heard time and time again stories of women stuck waiting for a late bus, of being passed up and waiting an hour for the next bus, and of unreliable real-time information on station signs and cell phone apps.

For women who rely on transit, an unreliable system has real consequences. A late train can mean daycare fines, a pass-up can mean a missed medical appointment, and infrequent early morning or late night service can limit employment opportunities.

These experiences cause women to alter their travel behavior – sometimes leaving hours ahead of time due to unreliable service, using ridesharing services instead of transit due to infrequent service at night, carrying a flashlight to ensure that they are not passed up by operators while waiting in the dark, or even sleeping at the bus stop because service does not start running until several hours after they get off work.

The primary concerns related to reliability are concerns in and of themselves, and exacerbate safety concerns. When headways are long, and real time information is unreliable, women's safety concerns are amplified and women who have the financial ability switch to a different mode, such as ridehailing. Others who do not have that luxury simply endure the exposure and stress of added wait times. Real time information and tools designed to help ease the stress of waiting for infrequent service often fail. These challenges become even more difficult when traveling with children or trip-chaining, or for women with jobs or household responsibilities.

LOS ANGELES DEPARTMENT OF TRANSPORTATION MOBILITY DATA SPECIFICATION

*City of Los Angeles Department of
Transportation, City of Los Angeles
Information Technology Agency*

AWARD OF EXCELLENCE
IMPLEMENTATION AWARD
(LARGE JURISDICTION)



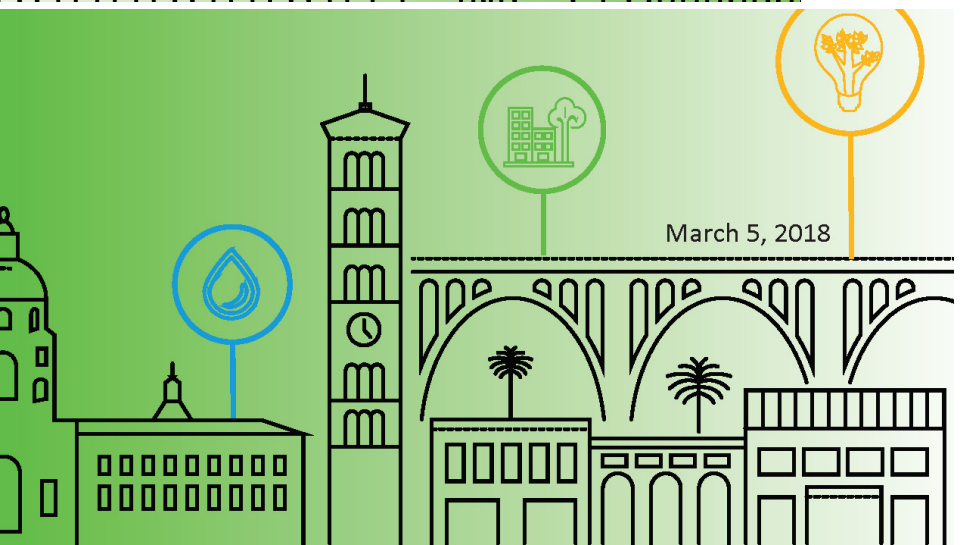


URBAN COOLING + FIRST/LAST MILE STRATEGIES FOR THE SHERMAN WAY STATION

Hon. Bob Blumenfield – Los Angeles City
Councilmember, StreetsLA, Alta Planning +
Design, Climate Resolve

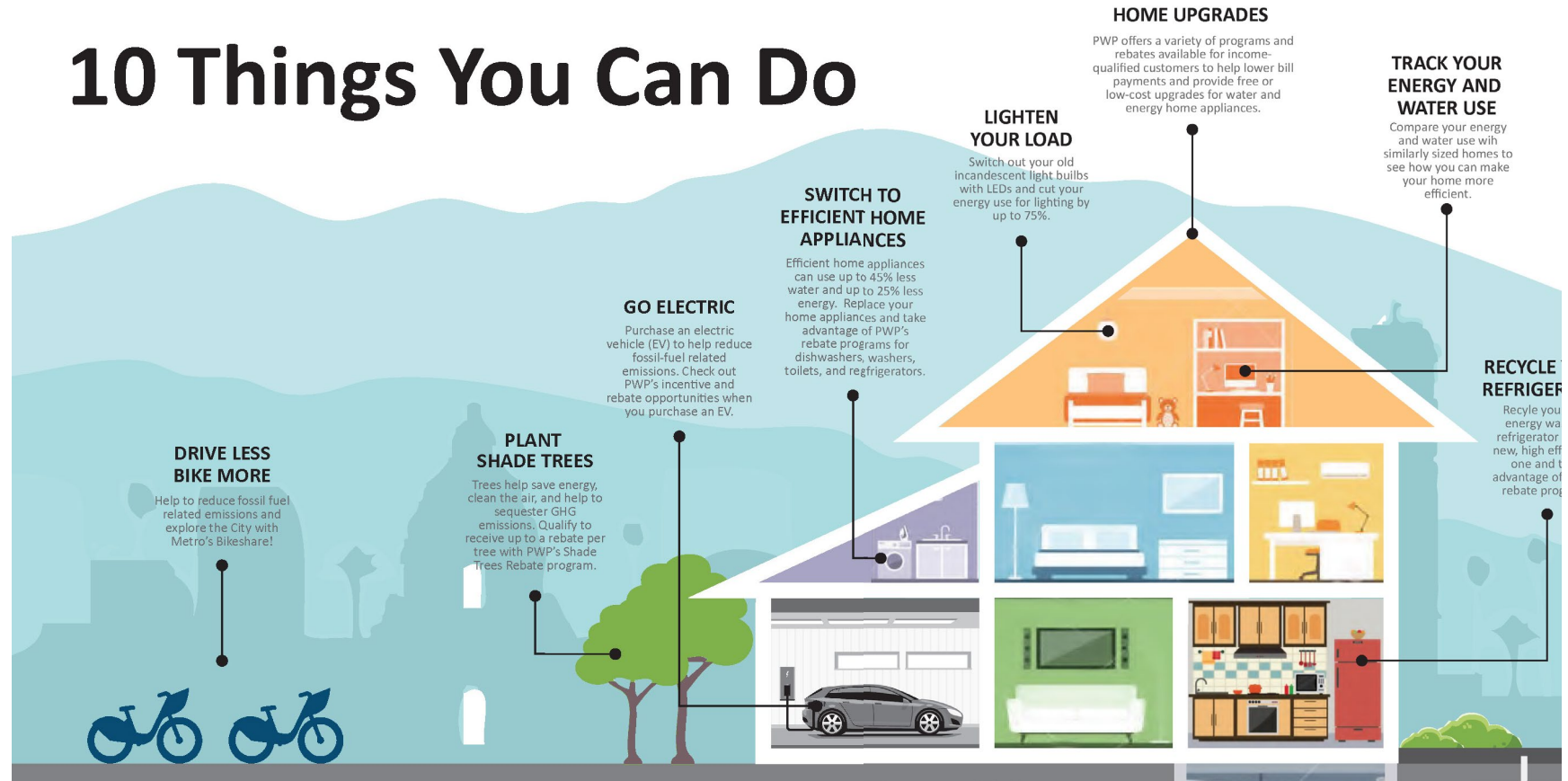
AWARD OF EXCELLENCE
TRANSPORTATION PLANNING





March 5, 2018

10 Things You Can Do



CITY OF PASADENA CLIMATE ACTION PLAN

*City of Pasadena Planning and Community Development Department,
and Rincon Consultants*

AWARD OF EXCELLENCE

INNOVATION IN GREEN COMMUNITY PLANNING

RESCUING THE SATIVA WATER SYSTEM

LA LAFCO (Local Agency Formation Commission for the County of Los Angeles), the County of Los Angeles, and SWRCB (State Water Resources Control Board)

AWARD OF EXCELLENCE
HARD-WON VICTORIES





Stories
from
the
East
San
Gabriel
Valley

A PEOPLE'S MAP: STORIES FROM THE EAST SAN GABRIEL VALLEY

*LA County Department of Regional
Planning, LA County Department of Arts
and Culture, and Fonografia Collective*

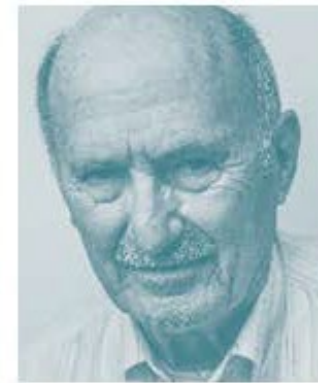
AWARD OF EXCELLENCE
PUBLIC OUTREACH



Lucy Pedregon



Gary Enderle



Hal Durian



Alex Araiza



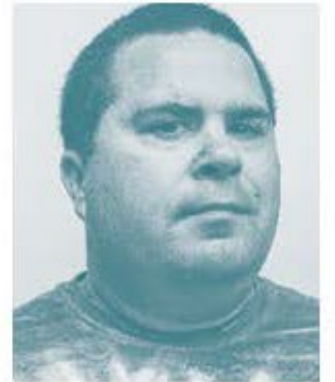
Bryan Coreas



Michael Keenan



Francine Rippy



Paul Neal



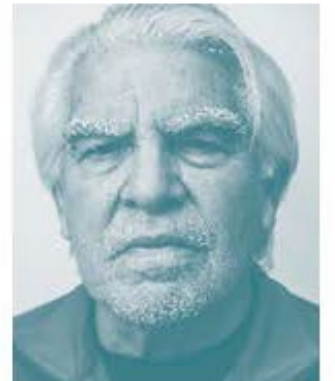
Caroline Basye Romero



Tim Miguel



Nicholas Nguyen



Jim Sanbrano

PLACETYPES

RESIDENTIAL

MULTIPLE FAMILY- LOW AND MODERATE DENSITY

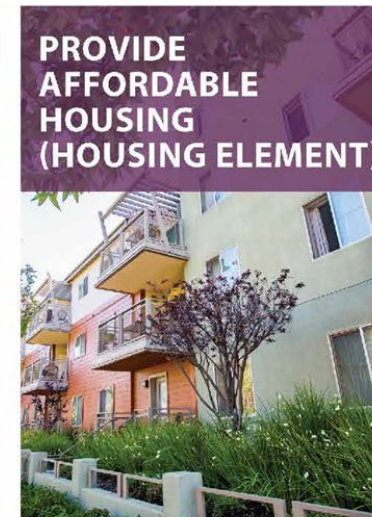
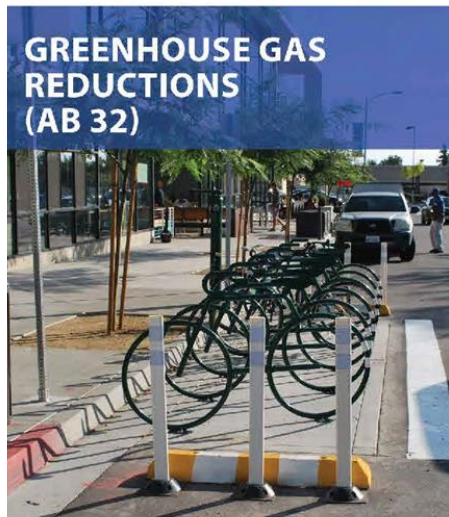
- Duplex, triplex, and garden apartments
- Neighborhood-serving, low-intensity commercial
- Schools, parks, daycare, senior care, police and fire stations, and libraries



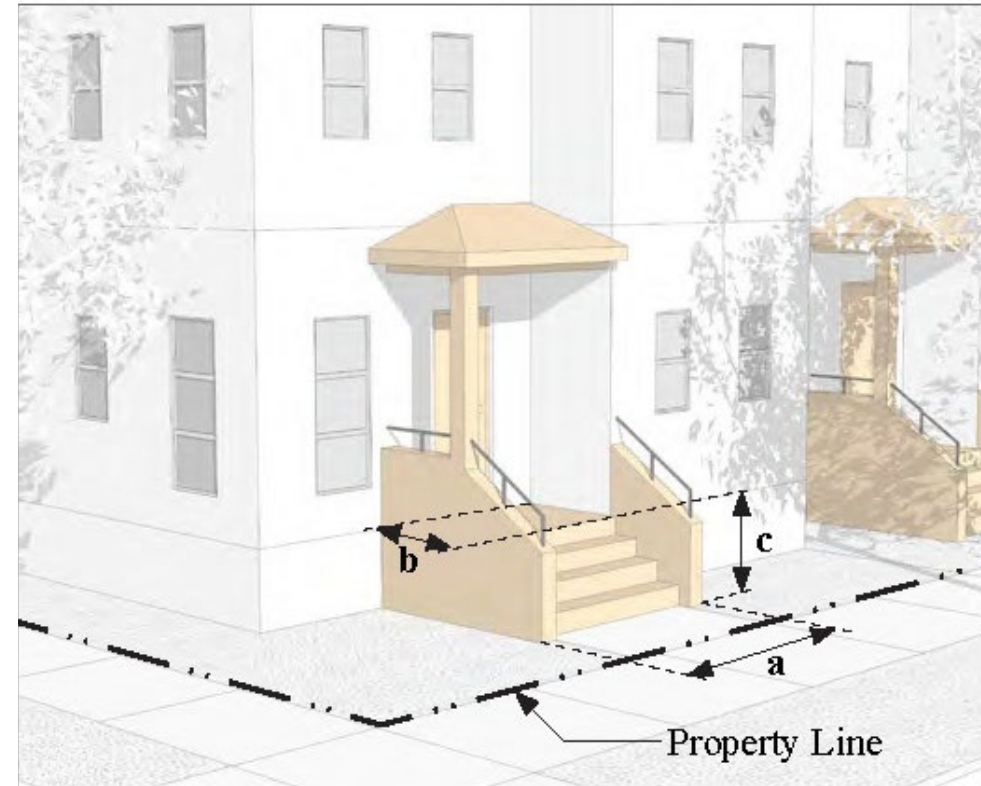
LONG BEACH LAND USE ELEMENT

City of Long Beach Development Services, City of Long Beach – Planning Bureau, MIG, RRM Design Group, Cityworks Design

**AWARD OF EXCELLENCE
COMPREHENSIVE PLAN (LARGE
JURISDICTION)**



SAN FERNANDO CORRIDORS SPECIFIC PLAN (SP-5)



AGAINST ALL ODDS: SAN FERNANDO CORRIDORS SPECIFIC PLAN

City of San Fernando, SCAG, Sargent Town Planning, Nelson/Nygaard, Gibson Transportation Consulting, Raimi + Associates, Metropolitan Research + Economics, Meridian Consultants, Fehr & Peers

AWARD OF EXCELLENCE
COMPREHENSIVE PLAN (SMALL JURISDICTION)



INNOVATION PLAN



CULVER CITY INNOVATION PLAN EIR

*Environmental Science Associates (ESA),
City of Culver City, Jay Ziff, Margarita
Jerabek, Kyle Garcia*

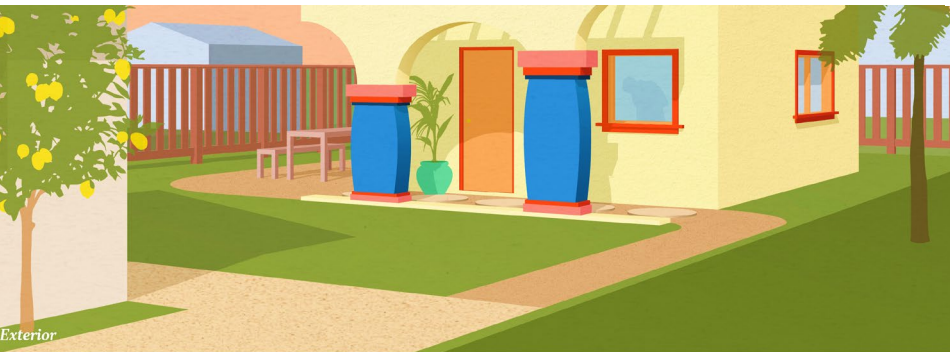
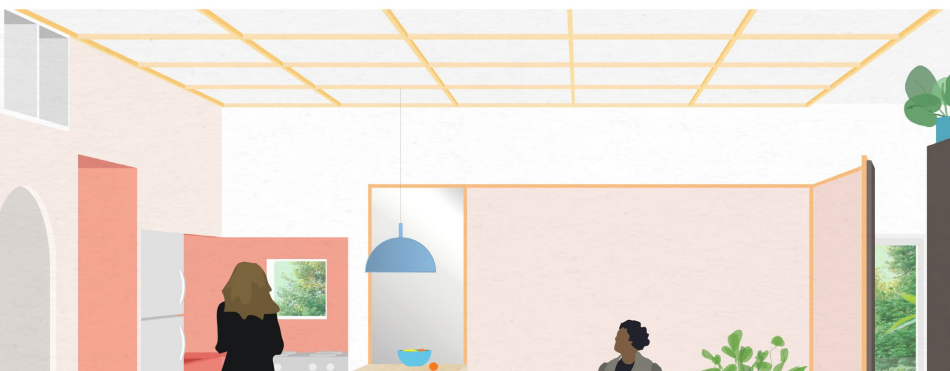
AWARD OF EXCELLENCE
ENVIRONMENTAL PLANNING

HOLLYWOOD WALK OF FAME MASTER PLAN

*Gensler, DCA Civil Engineering Group,
Historic Resources Group, Sam
Schwarz Transportation Consultants,
Studio MLA*

AWARD OF EXCELLENCE
URBAN DESIGN

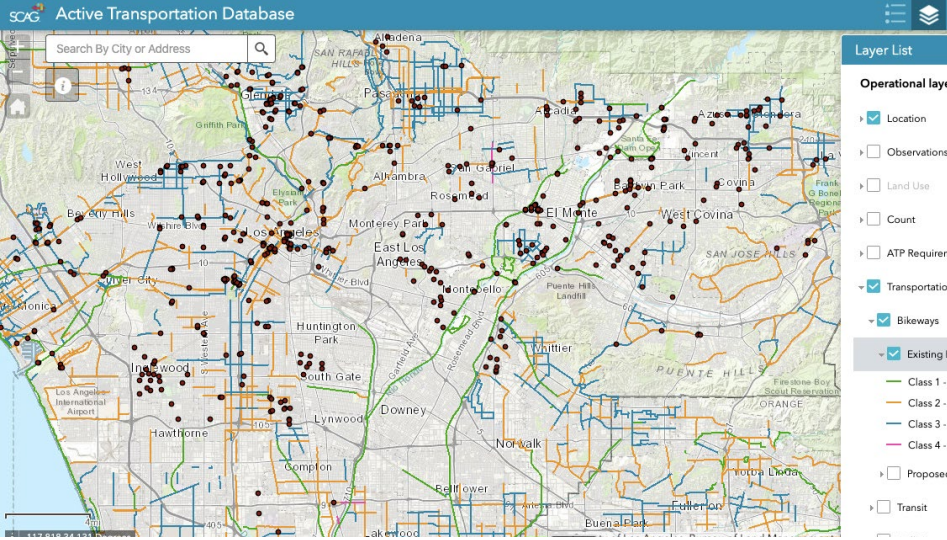




THE BACKYARD HOMES PROJECT

LA-Más

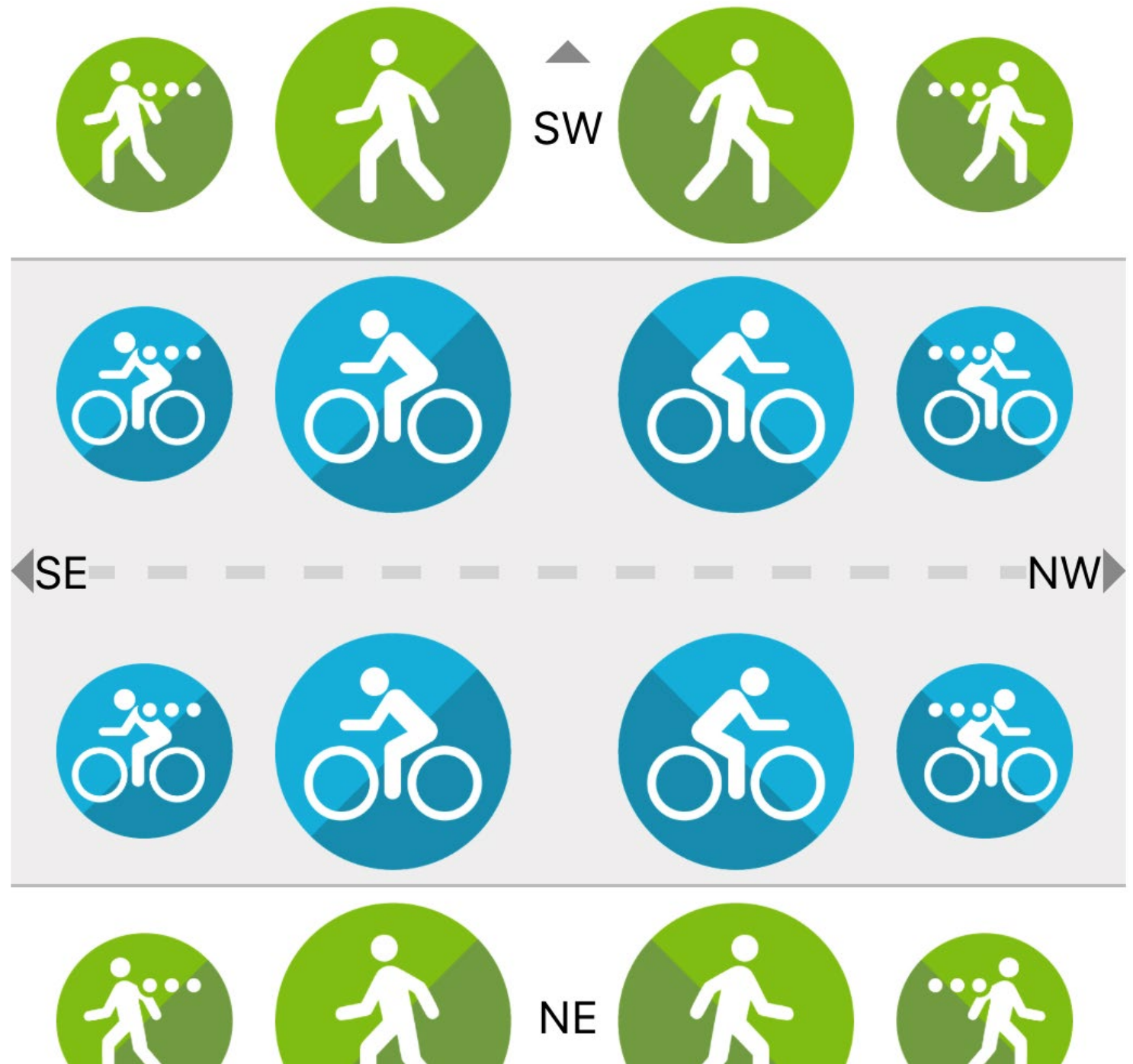
AWARD OF EXCELLENCE
OPPORTUNITY AND EMPOWERMENT



SCAG ACTIVE TRANSPORTATION DATABASE

Southern California Association of Governments (SCAG), UCLA Luskin School of Public Affairs, LA Metro, San Bernardino County Transportation Authority, Cambridge Systematics, and AgreeYa Solutions

AWARD OF EXCELLENCE
INNOVATIVE USE OF TECHNOLOGY





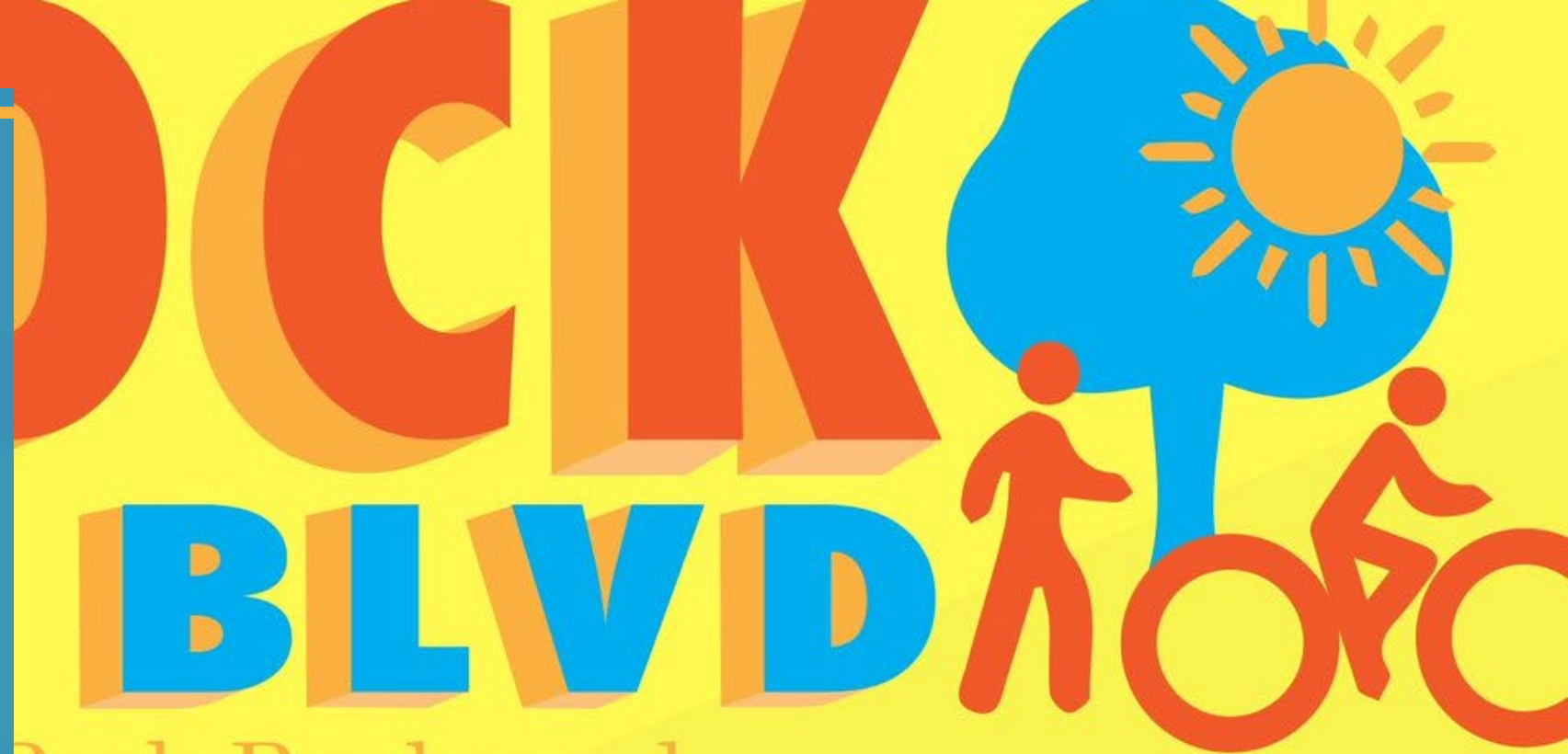
EXPOSITION CORRIDOR TRANSIT NEIGHBORHOOD PLAN

Los Angeles City Planning, LA DOT, LA Department of Public Works, TAHA,
Sirius Environmental, Fehr & Peers, Gruen, Pro Forma Advisors LLC
AWARD OF EXCELLENCE
NEIGHBORHOOD PLANNING

ROCK THE BOULEVARD

*The Eagle Rock Association, the
Office of Councilmember Jose Huizar,
Occidental College, the Eagle Rock
Neighborhood Council, the Eagle
Rock Chamber of Commerce,
Deborah Murphy Design + Planning,
and SALT Landscape Architects*

AWARD OF EXCELLENCE
GRASSROOTS INITIATIVE



Rock Boulevard

en House

COME AND SEE THE DESIGN



PARKING? LOTS! PARKING OVER THE MINIMUM IN THE CITY OF LOS ANGELES

*Katelyn Stangl, Department of Urban Planning, UCLA Luskin School of Public Affairs
and the UCLA Institute of Transportation Studies; Los Angeles City Planning*

AWARD OF EXCELLENCE
ACADEMIC

LOS ANGELES CITY PLANNING PUBLICATIONS

*Los Angeles City Planning External
Affairs Division - Community and
Council Liaison Unit, Graphic Services
Section, Performance Management
Unit, Public Information and Public
Relations Unit*

AWARD OF EXCELLENCE
COMMUNICATIONS
INITIATIVE



LOS ANGELES
CITY PLANNING

ing
019



HATCHLABS @LA BIOSCIENCE HUB

Estolano Advisors; Los Angeles Economic Development Corporation, Mayor's Office-City of Los Angeles, Grifols Biologics, Holy Grounds

AWARD OF EXCELLENCE

ECONOMIC PLANNING AND DEVELOPMENT



AWARDS OF MERIT

*First/Last Mile Walk Audit
Application*

*West Hollywood Green Building
Program*

*The Los Angeles LGBT Center's
Anita May Rosenstein Campus*

Omnibus

*2019 Community Planning Month
Speaker Series*

Long Beach Land Use Element

*City of Bell Gardens Complete
Streets Plan*

*Los Angeles Citywide Design
Guidelines*



WEST HOLLYWOOD GREEN BUILDING PROGRAM

Let's Move Forward Together

What's New This Time Around?

The new and improved West Hollywood Green Building Program is designed to be impactful, achievable, and responsive to local and regional climate action priorities.

The New Program:

Respects Community and Environment

- Reflects community input and city goals for design and building in an environmentally sensitive way
- Introduces progressive green building concepts that consider the unique physical characteristics of West Hollywood
- Aligns with the State Green Building standards, ensuring better compliance
- Is no longer a point-based system

Provides Innovative Building Advantages

- Allows flexibility in the design of open space, vegetative space, and sustainable roof treatments to foster creativity in development
- Strengthens requirements related to indoor and outdoor water conservation
- Prepares owners and property managers for energy efficiency in building and site operations post-construction
- Revises local requirements for



weho.org/greenbuilding

Let's Move
Forward Together



The updated West Hollywood Green Building Program builds upon state requirements and integrates locally-specific mandatory provisions that align with the City's environmental goals.



How Do I Get Started?

Help West Hollywood lead the way in green building design and construction. Innovation begins with you. Take these steps to get started:



Visit the Website.
Let's build smart together. Start by visiting weho.org/greenbuilding.



Review the Program.
Learn how to build smarter with the City's green building program.



Contact Us.
Questions or concerns? Call (310) 844-4470. We're here to help.

weho.org/greenbuilding

Lead the Way with the
City of West Hollywood



WeHoGreenBuilding

WEST HOLLYWOOD GREEN BUILDING PROGRAM

City of West Hollywood, Raimi + Associates, DNV GL, Steven Groner Associates, and Golden Design Studio

AWARD OF MERIT

INNOVATION IN GREEN COMMUNITY PLANNING



THE LOS ANGELES LGBT CENTER'S ANITA MAY ROSENSTEIN CAMPUS

The Los Angeles LGBT Center, Thomas Safran & Associates, Councilmember David E. Ryu, Congressman Adam Schiff, Mayor Eric Garcetti, Supervisor Sheila Kuehl, Anita May Rosenstein Foundation, Wilbur D. May Foundation, the Anita and Arnold Rosenstein Family Foundation, Leong Leong, Killefer Flammang Architects (KFA), and Swinerton Builders.

AWARD OF MERIT
OPPORTUNITY AND EMPOWERMENT



FIRST/LAST MILE WALK AUDIT APPLICATION

LA Metro, City of Inglewood, Here LA, Steer, The Robert Group

AWARD OF MERIT

INNOVATIVE USE OF TECHNOLOGY



LONG BEACH LAND USE ELEMENT

*City of Long Beach Development Services,
City of Long Beach — Planning Bureau, MIG,
RRM Design Group, Cityworks Design*

**AWARD OF MERIT
HARD-WON VICTORIES**

Escape Rooms

LAND USE IN THE ZONING CODE | ZONING CODE MODERNIZATION



WHAT IS THIS CHANGE?

Define and provide regulations for indoor amusement/entertainment facilities which are not elsewhere defined, including escape rooms.

WHY MAKE THIS CHANGE?

Currently escape rooms and other similar group recreational activities are not recognized in the Zoning Code since they are a recently evolved phenomenon. A general definition for amusement/entertainment creates flexibility in the code; allowing the land use category to accommodate changes in the businesses types within this land use category.

WHAT IS AN ESCAPE ROOM?

An escape room is an indoor amusement/entertainment facility where patrons solve puzzles, riddles, clues within one or more rooms within a specified time.

DETAILS FOR THE PROPOSED CHANGES

CURRENT

There is no definition for escape rooms within any of the zoning districts.

PROPOSED

Escape rooms would be included in a new indoor "amusement/entertainment facilities" category of land uses and be applied consistently within the neighborhood commercial zoning districts.



OMNIBUS

City of Long Beach Development Services, City of Long Beach - Planning Bureau, CityFabrick

AWARD OF MERIT
BEST PRACTICES

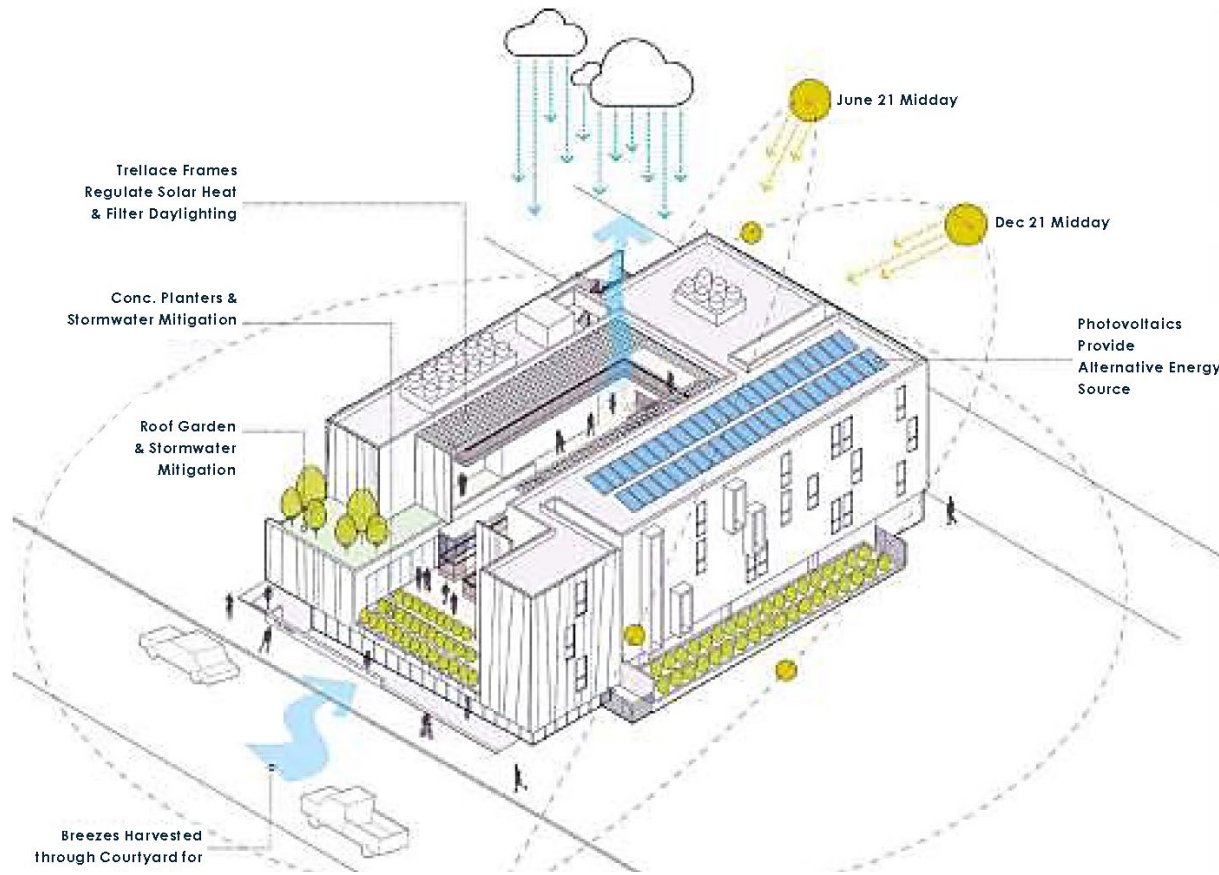


DEPARTMENT OF REGIONAL PLANNING 2019 COMMUNITY PLANNING MONTH SPEAKER SERIES

*LA County Department of Regional
Planning, Advance Planning Social
Media Team*

AWARD OF MERIT
COMMUNICATIONS
INITIATIVE





BEST PRACTICES

Site Planning

- Consider placing non-habitable uses such as parking structures, mechanical equipment and utilities adjacent to sources of noise and/or pollutants (i.e. freeways, industrial uses).
- Place habitable areas, outdoor spaces, and other amenities far from nuisances.
- Utilize landscaping and/or berms to buffer occupants from nearby nuisances that emit noise and/or pollutants.



LOS ANGELES CITYWIDE DESIGN GUIDELINES

Los Angeles City Planning Urban Design Studio

AWARD OF MERIT

URBAN DESIGN



CITY OF BELL GARDENS COMPLETE STREETS PLAN

City of Bell Gardens, KOA Corporation, Avant-Garde
AWARD OF MERIT
TRANSPORTATION PLANNING



CITY OF BELL GARDENS